

2016 SEMESTRAL ASSESSMENT 2
ENGLISH LANGUAGE – PAPER 2
LANGUAGE USE AND COMPREHENSION
PRIMARY 4

Name : _____ ()

Class : Primary 4 / _____

Date : 25 October 2016

Note:

1. Do not open this booklet until you are told to do so.
2. Read carefully the instructions given at the beginning of each section.
3. Do not waste time. If a question is difficult for you, go on to the next one.
4. Check your answers thoroughly and make sure you attempt every question.

43 Questions

50 Marks

Duration of Paper: 1 hour 15 minutes

ITEMS	OBTAINED	POSSIBLE
MCQ		24
Qn 20 - 43		26
TOTAL		50

Parent's Signature : _____

SECTION A : Vocabulary (6 marks)

Choose the correct answer and shade its number on the OAS provided.

- 1 The water in the swimming pool is so _____ that I could hardly see the bottom of the pool.
- | | |
|----------|-------------|
| (1) low | (2) high |
| (3) deep | (4) shallow |
- 2 Mother checked to see if she had bought all the _____ for her new recipe.
- | | |
|----------------|-----------------|
| (1) food | (2) groceries |
| (3) provisions | (4) ingredients |
- 3 Jamie searched _____ for his missing handphone.
- | | |
|----------------|-------------------|
| (1) warily | (2) frantically |
| (3) carelessly | (4) irresponsibly |
- 4 All the _____ of the accident were sent to the nearest hospital.
- | | |
|---------------|----------------|
| (1) victims | (2) patients |
| (3) onlookers | (4) passers-by |
- 5 Elaine often _____ when she speaks, so it is difficult to hear what she says.
- | | |
|--------------|--------------|
| (1) tumbles | (2) crumbles |
| (3) grumbles | (4) mumbles |
- 6 Edmund was told to _____ his toys so that no one would step on them.
- | | |
|--------------|--------------|
| (1) put up | (2) put off |
| (3) put away | (4) put down |

SECTION B : Grammar (8 marks)

Choose the correct answer and shade its number on the OAS provided.

- 7** Mrs Tan told her son to carry the groceries _____.
(1) herself (2) himself
(3) myself (4) yourself
- 8** During the national competition yesterday, our basketball team _____ exhausted after the final match.
(1) is (2) are
(3) was (4) were
- 9** Our neighbours _____ kind enough to help us when we moved into our new house.
(1) is (2) are
(3) was (4) were
- 10** "We _____ at Changi International Airport right now. Please buckle up immediately," announced the pilot.
(1) land (2) landed
(3) have landed (4) are landing
- 11** Yesterday, Susan _____ numerous presents from her relatives for her birthday.
(1) receives (2) received
(3) has received (4) was receiving
- 12** While everyone _____ silently, Wei Yang chose to play with his stationery.
(1) reads (2) will read
(3) was reading (4) were reading

13 _____ bandages on the table in that corner should be placed in the first aid kit.

- (1) This
- (3) These

- (2) That
- (4) Those

14 She could not go to bed early as she has _____ work to do.

- (1) few
- (3) much

- (2) little
- (4) many

SECTION C : Visual Text Comprehension (10 marks)

Read this flyer carefully and answer the questions that follow. Choose the correct answer and shade its number on the OAS provided.

Walk-In-The-Park

Continuing its successful inaugural event at East Coast Park last year



Date & Time : 5 November 2016 at 7am
Venue : Kallang Leisure Park
Cost : \$5 per participant

A 1km walk/run that ends with a huge carnival!



Carnival Activities

Join us at the Carnival at the Singapore Sports Hub. Admission is free for children when accompanied by their parents.

Gifts for Participants

All participants will receive a free t-shirt from Fitness Gear.
The first 100 participants to finish will receive an exclusive water bottle!



Walk-In-The-Park Lucky Draw

Every participant will also receive a Lucky Draw ticket for the Walk-In-The-Park Lucky Draw 2016, which will be held on 6 November 2016 at Marina Bay Sands.

Winners will be announced on the spot and are expected to collect their prizes immediately. Unclaimed prizes will be donated to a local charity.

The first 3 participants to reach the finish line will win the following prizes:

- 1st place** - 3 Days 2 Nights staycation at Marina Bay Sands
- 2nd place** - \$200 cash and a Walk-In-The-Park 2016 commemorative keychain
- 3rd place** - \$100 cash and a Walk-In-The-Park 2016 commemorative keychain

15 The Walk-In-The-Park event will begin at _____.

- (1) East Coast Park
- (2) Marina Bay Sands
- (3) Kallang Leisure Park
- (4) Singapore Sports Hub

16 This is the _____ Walk-In-The-Park event held.

- (1) first
- (2) second
- (3) final
- (4) only

17 Children need not pay for the Carnival if they _____.

- (1) participate in the Lucky Draw
- (2) buy a t-shirt from Fitness Gear
- (3) are accompanied by their parents
- (4) took part in the event the previous year

18 If Emily is the 90th person to finish the walk/run, she will receive _____ from the event.

- (1) a t-shirt
- (2) a t-shirt and a water bottle
- (3) a t-shirt, a water bottle and a Lucky Draw ticket
- (4) a t-shirt, a water bottle, a Lucky Draw ticket and a commemorative keychain

19 Which one of the following statements is false?

- (1) The lucky draw will be held at Marina Bay Sands.
- (2) The carnival will be held at Singapore Sports Hub.
- (3) The prizes from the Lucky Draw can be claimed on the day of the walk/run.
- (4) The first participant to complete the walk/run will not receive any prize money.

SECTION D : Grammar Cloze (4 marks)

Read the passage carefully. Choose the correct word from the words given in the box and write its letter (A to F) in each blank.

USE EACH WORD ONLY ONCE

(A) I	(B) we	(C) them
(D) you	(E) me	(F) they

Dear Cody,

I got a puppy for my birthday! _____ cannot imagine how happy I
(20)

was when _____ first set my eyes on Bree. Bree is such a cheerful puppy
(21)

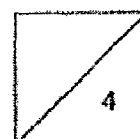
who always makes _____ laugh with its tricks. Bree also loves to play with
(22)

other pups as playing with _____ helps it to socialise. I can't wait for you to
(23)

meet Bree.

Your cousin,

Alan



SECTION E : Grammar Cloze (4 marks)

Read the passage carefully. Underline the correct word from the words given in the brackets.

My uncle is a fireman. He (24) [like / likes] to help people who (25) [is / are] in trouble. He often risks his life in order to save others. Sometimes, he gets burnt too but he (26) [do / does] not mind it at all. All of his friends think that he is brave and (27) [admire / admires] him a lot. I am proud of him too!

SECTION F : Editing (4 marks)

Correct each word in bold for spelling and underlined for punctuation. Write the correct word or punctuation in the relevant box.

Grandfather gave Ruby some special plant food. She waters the sunflower and gives
it plant food every day.

(28)

Saul is in Rubys class. He lives two doors away. His sunflower is very tall. Ruby

can see it from her bedroom window every night.

(29)

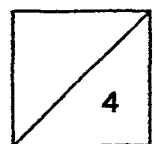
"I'm sure mine is the tallest," she thaught. "Saul never wins anything."

(30)

The contest ends tomorrow. Mr Buckley is coming round to meshure all the

(31)

flowers in the neighbourhood. Ruby is excited. so she jumps around and gets in everyone's
way. Mother glares at her.



SECTION G : Sentence Combining (4 marks)

For each of the questions, rewrite the given sentence(s) using the words provided. Your answer must be in one sentence. The meaning of your sentence must be the same as the meaning of the given sentence(s).

- 32** Amelia does not like watching horror movies. Her friends do not like watching horror movies too.

Neither _____ nor

- 33** My family ran out of our home. We wanted to escape the fire.

_____ in order to

SECTION H : Comprehension (10 marks)

Read the passage carefully and answer the questions that follow.

European Space Agency (ESA) astronauts Tim Peake, Tim Kopra and Russian cosmonaut commander Yuri Malenchenko have arrived at the International Space Station (ISS). They blasted off from Earth earlier today, and after an exciting six-hour journey, their Soyuz spacecraft docked with the ISS. The astronauts and cosmonaut then carefully checked that the connection was completely airtight 5 before opening the hatch and climbing on board. Ready to give them a warm welcome were three space explorers already on board: Russian cosmonauts Mikhail Korniyenko and Oleg Kononenko, and National Aeronautics and Space Administration (NASA) astronaut Scott Kelly.

This is the start of British astronaut Tim Peake's six-month stay on the ISS. 10 He will be working on lots of experiments, including growing crystals in space and seeing how the brain changes to deal with stressful situations. These experiments will help people on Earth, and also improve technology for future astronauts. Tim hopes that his mission will inspire children to discover more about space. A 13-year-old boy designed the mission logo, and some school children have even created 15 apps to gather data from on board the ISS!

This has been a fantastic year for ESA astronauts visiting the ISS. Tim and his fellow crew members now have a few days to get used to weightlessness before their work schedule begins.

Story adapted from https://www.esa.int/esaKIDSen/SEMAH5FE2II_LifeinSpace_0.html

For Q34 – Q35, decide where each astronaut was before the Soyuz spacecraft docked with the ISS. Refer to paragraph 1. Tick ✓ your chosen answer. The first example has been done for you. [2m]

	Astronauts mentioned in paragraph 1	Soyuz Spacecraft	International Space Station
Example	Mikhail Korniyenko		✓
Q34	Yuri Malenchenko		
Q35	Scott Kelly		

Q36 The astronauts and cosmonaut did three things when they docked Soyuz spacecraft at the ISS. Write 1, 2 and 3 in the blanks below to show what they did first, next and last in paragraph 1. [1m]

_____ They opened the hatch.

_____ They climbed on board ISS.

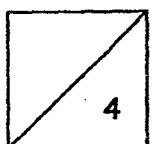
_____ They checked that the connection was completely airtight.

Q37 Tick ✓ your chosen answer.

Tim Peake will be staying on the International Space Station for

_____. [1m]

<input type="checkbox"/>	6 days
<input type="checkbox"/>	6 months
<input type="checkbox"/>	6 years



Q38 Name one experiment to be carried out in space.

[1m]

--

For Q39 – Q41, read the statement and tick ✓ “True” or “False”. Refer to paragraph 2 to help you. The first example has been done for you. [3m]

	Statement	True	False
Example	Tim Peake is a British astronaut	✓	
Q39	Tim will be growing gems in space.		
Q40	The experiments done on the ISS will help people on Earth.		
Q41	A 13-year-old made an app to gather data on board the ISS.		

Q42 Which word has the same meaning as ‘influence’? Circle (A) or (B).

[1m]

Tim hopes that his mission will <u>inspire</u> children to <u>discover</u> more about space. (A) (B)

Q43 Tick ✓ your chosen answer.

Having a few days to 'get used to weightlessness' suggests that the astronauts need more time to _____. [1m]

☐

adjust to their new condition

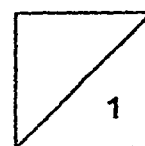
☐

gather data on board the ISS

☐

get used to their new work schedule

END OF PAPER



ANSWER KEY

YEAR : 2016
 LEVEL : PRIMARY 4
 SCHOOL : RED SWASTIKA
 SUBJECT : ENGLISH
 TERM : SA2

Q1	Q2	Q3	Q4	Q5	Q6	Q7	Q8
3	4	2	1	4	3	2	3
Q9	Q10	Q11	Q12	Q13	Q14	Q15	Q16
4	4	2	3	4	3	3	2
Q17	Q18	Q19	Q20	Q21	Q22	Q23	
3	3	3	D	A	E	C	

Q24	Q25	Q26	Q27	Q28	Q29	Q30	Q31
likes	are	does	admire	Ruby's	thought	measure	excited,

Q32 Neither Amelia nor her friends like watching horror movies.

Q33 My family ran out of our home in order to escape the fire.

Astronauts mentioned in paragraph 1		Soyuz Spacecraft	International Space Station
Example	Mikhail Korniyenko		✓
Q34	Yuri Malenchenko	✓	
Q35	Scott Kelly		✓

Q36 2 They opened the hatch.

3 They climbed on board ISS.

1 They checked that the connection was completely airtight.

Q37 ✓ 6 months

Q38 growing crystals

	Statement	True	False
Example	Tim Peake is a British astronaut	✓	
Q39	Tim will be growing gems in space.		✓
Q40	The experiments done on the ISS will help people on Earth.	✓	
Q41	A 13-year-old made an app to gather data on board the ISS.		✓

Q42 (A)

Q43 ✓ adjust to their new condition.

End

